

FACILITATOR PROFILE

MAY 2025

SHANTI SHARMA



GROW WITH SATORI

+91 96209 25516

SHANTI@GROWWITHSATORI.COM

WWW.GROWWITHSATORI.COM

ABOUT THE FOUNDER

SHANTI SHARMA

AUTHOR, FOUNDER AND CHIEF CREATOR, COLLABORATOR AND COACH, GROW WITH SATORI
ICF PCC, MCCP | DIRECTOR, LEARNING ICF BENGALURU CHARTER CHAPTER



Hi, I am *Shanti Sharma*; **Developing and Growing** people is my passion. I am very fortunate to live my passion both at work and off work. I'm an ardent **Learning & Organizational Development** professional with over 28 years of experience, 25+ of which have been devoted to **Learning & Development (L&D)**. Throughout my journey, I've had the privilege of partnering with organizations across **IT, BPO, Healthcare, Manufacturing, Real Estate, BFSI, and beyond**.

I've led end-to-end L&D functions, steered organizational development initiatives, and managed projects ranging from **small-scale implementations to large, multi-location, cross-functional transformations**.

What sets me apart is my ability to **bridge strategic visioning with operational execution**. I've championed initiatives in **social learning, innovation, and content curation**, and I thrive in **fast-paced, dynamic environments** where customer-centricity and clarity amid ambiguity are essential.

My passion lies in designing meaningful, outcome-driven **Learning Journeys**. Whether it's a leadership program or a professional skills workshop, I curate experiences that meet diverse learning preferences through the right mix of modalities, reflection, and engagement.

As a *facilitator*, I've worked with professionals across levels—helping individuals and teams discover their potential, build confidence, and grow with purpose.

As a *coach*, I wear many hats:

- ICF PCC—Certified Coach
- EMCC Senior Practitioner
- Certified Mentor Coach (CMCC) through Coach to Transformation
- NSDC—Skill India Certified POSH Educator and Trainer

I also draw upon **Neuro Linguistic Programming (NLP)** and **Transactional Analysis (TA)** to enrich my coaching conversations. These practices ground my work in self-awareness, resilience, and calm clarity – not just for my clients, but for me as a person.

My *coaching style* is anchored in **empathy, structure, and results**. I support clients through one-on-one, group, and team coaching engagements – helping them reconnect with their goals, uncover inner strengths, and move forward with intentionality. I integrate assessments like **Harrison, Belbin, DiSC, and Interaction Styles** to enhance awareness and deepen the learning experience for every personality and learning type.

As a *Leadership Coach, Performance Coach, and Team Coach*, I support individuals and teams in finding their **rhythm, balance, and mojo**. I hold space for meaningful dialogue, alignment, and transformation, whether through private coaching, group journeys, or team interventions.

I'm currently empanelled with globally reputed platforms, including:

- BetterUp
- uExcelerate
- Mohana HR Futuristics
- CoachBase

These partnerships allow me to engage with a diverse spectrum of professionals across the globe, helping them navigate growth and change with confidence.

Previously, I served on the **ICF Bengaluru Charter Chapter Board** as **Director of Learning & Events**, contributing to the vibrancy and evolution of the coaching community.

Today, I lead **Grow with Satori** – a venture born from the heart, dedicated to empowering individuals and teams through awareness, insight, and intentional action.

If our paths align or if you'd like to explore how we can co-create growth, feel free to connect:
www.linkedin.com/in/shantisharma



THE SATORI EFFECT *el*

**REAL GROWTH, REAL STORIES,
REAL TRANSFORMATION.**

HERE ARE SOME OF MY TESTIMONIALS :



Thank you so much for your support as a coach through the sessions. You are such an empathetic and wonderful human being, felt supremely safe to share with you. Hoping to catch up with you soon in person. Thank you Seetha and Lean In for this wonderful opportunity.

SAUMITA DAS, ODESSA

MANAGER, LEADERSHIP DEVELOPMENT AND
ENTERPRISE LEARNING



The mentoring sessions with Shanti were really insightful and it helped deepen our understanding of each of the ICF Competencies. Her guidance facilitated deep reflection on our practice, allowing us to observe how we applied our learnings in our sessions. By incorporating various scenarios and case discussions, she enriched our learning experience. Her extensive knowledge in addition to her warm and approachable style made it feel comfortable to discuss any questions or doubts.

PREKSHYA MAHARANA

LEADERSHIP AND CAREER COACH



The journey with Shanti for my ACC credentials has been a fantastic experience. I would like to come back and work with her in my PCC journey too and several reasons why I say this, first the sincerity with which Shanti works with you is unparalleled. She is there every step of the way. Second her knowledge and network is vast, indepth and thorough. Third as a person she inspires me massively to be a better coach. I wish her much success growing satori as grow with satori grows us.!

SUBHASHINI ACHARYA, SCHNEIDER ELECTRIC
LEARNING LEADER



I had the pleasure of attending Shanthi's Golden Circle session, and I must say it was truly inspiring! Shanthi's passion for personal development shone through every word, leaving us all motivated and empowered. During the session, we delved into the core principles of the Golden Circle, exploring the "why" behind our actions and goals. Shanthi's guidance helped us uncover our deeper purpose, driving us to make meaningful contributions in both our personal and professional lives. Her expertise and engaging approach created an atmosphere of collaboration and growth, where everyone felt encouraged to share their insights and experiences. Thank you, Shanthi, for leading such an enriching session! Your dedication to helping others reach their full potential is truly admirable. Looking forward to applying these valuable lessons in my journey ahead.

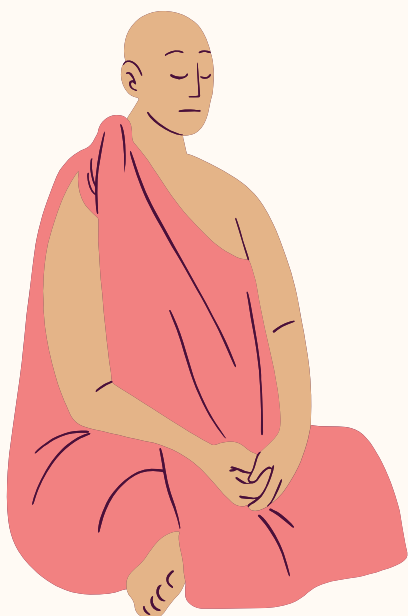
PRIYA NAGRAJ, KNS INFRASTRUCTURE
SENIOR PROCESS MANAGER

ABOUT GROW WITH SATORI

'*Grow with Satori*' is intended to enable **awakening through self-discovery**.

The term Satori by definition is a *sudden enlightenment and a state of consciousness* attained by intuitive illumination representing the spiritual goal of Zen Buddhism. It refers to the inner, intuitive experience of Enlightenment.

Satori is said to be unexplainable, indescribable, and unintelligible by reason and logic. It is comparable to the experience undergone by *Gautama Buddha* when he sat under the Bodhi tree and, as such, is the central Zen goal. Grow with Satori and it's partners, hope to impart knowledge and learning and walk with you through coaching to enable you to attain your Zen goal...Satori!



GROW WITH SATORI
Short, power-packed videos on key topics



GROW WITH SATORI
Meaningful self-development and leadership development content



@GROWWITHSATORI
Bite-sized inspiration



@GROWWITHSATORI
Sharp insights and real-time thoughts that spark reflection



GROW WITH SATORI
Community stories, events, and engaging updates

OUR OFFERINGS

LEARNING

- Leadership Development
- Self-Leadership
- Holistic Wellbeing
- Professional Development
- Technical / Role Specific

COACHING

- For Corporate Professionals
- Group Coaching
- Team Coaching
- Mentor Coaching

CONSULTING

- Talent and Training
- Sales and Strategy

+91 96209 25516

SHANTI@GROWWITHSATORI.COM

WWW.GROWWITHSATORI.COM